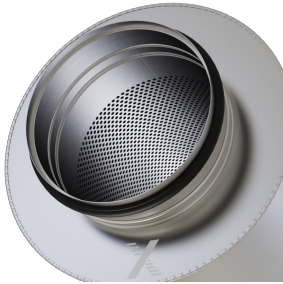
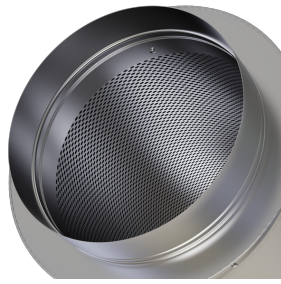


Spigot with groove



Spigot with lip seal



Socket-type spigot

CAH

CIRCULAR SILENCERS FOR THE REDUCTION OF NOISE IN CIRCULAR DUCTS OF VENTILATION AND AIR CONDITIONING SYSTEMS

Circular silencer made of galvanised sheet steel or stainless steel

- Attenuation effect due to absorption
- The sound absorbing material is non-combustible mineral wool and non-hazardous to health according to the German TRGS 905 (Technical Rules for Hazardous Substances) and EU directive 97/69/EC
- Acoustic data measured to ISO 7235
- Leakage class C or D (depending on size) to EN 15727.
- For use in areas with potentially explosive atmospheres (according to EC Directive 2014/34/EU (ATEX)), zones 1, 2, and zones 21 and 22 (outside) according to EC Directive 1999/92/EC

Optional equipment and accessories

- Spigot with lip seal, for circular connecting ducts to EN 1506 or EN 13180
- Socket-type spigot suitable for circular ducts to EN 1506 or EN 13180

General information

Application

- Circular silencer for the reduction of noise
- For the reduction of air-regenerated noise of air terminal units LVC, TVR, TVE and of mechanical self-powered controllers RN and VFC
- For the reduction of fan noise
- Can be used as cross talk silencer to reduce the transfer of noise through ducts between neighbouring rooms

Special features

- Insertion loss measured according to ISO 7235
- The sound absorbing material is non-combustible
- Insulation thickness 25, 50 or 100 mm
- Leakage class D for nominal sizes up to and including 400 mm
- Leakage class C from nominal size 450 mm

Nominal sizes

- ØD: 80, 100, 125, 160, 200, 250, 315, 400, 450, 500, 560, 630, 710, 800 mm
- L: 500, 1000, 1500 mm

For VAV terminal units and CAV controllers

- ØD: 100, 125, 160, 200, 250, 315, 400 mm

Variants

- 025: Circular silencer with 25 mm insulation
- 050: Circular silencer with 50 mm insulation
- 100: Circular silencer with 100 mm insulation

Construction

Circular silencer

- No entry: galvanised steel 1.0917
- A2: Stainless steel 1.4301

Type of connection:

- No entry: spigot with groove on both ends
- D2: Spigot with lip seal on both ends
- AS: Spigot with lip seal and socket-type spigot on one end

Parts and characteristics

- Circular casing
- Perforated inner duct
- Absorption material

Construction features

- Circular casing
 - Outer duct: spiral duct, galvanised steel 1.0917
 - Outer duct: plain duct, stainless steel 1.4301
- Spigot suitable for circular ducts to EN 1506 or EN 13180
- Lip seals up to nominal size 800
- Max. operating pressure 2000 Pa
- Max. airflow velocity 20 m/s
- Max. operating temperature 90 °C

Materials and surfaces

- Outer duct and perforated inner duct are spiral ducts made of galvanised sheet steel 1.0917
- Plain outer duct made of stainless steel 1.4301
- Perforated inner duct in stainless steel 1.4301
- Spigot made of galvanised sheet steel 1.0917 or stainless steel 1.4301
- Absorption material is mineral wool
 - To EN 13501-1, fire rating class A1, non-combustible
 - Non-hazardous to health according to the German TRGS 905 (Technical Rules for Hazardous Substances) and EU directive 97/69/EC
 - Inner duct with non-woven fibre (fleece) as a protection against erosion from airflow velocities of up to 20 m/s
 - Inert to fungal and bacterial growth according to EN 846

Standards and guidelines

- Insertion loss and sound power level of air-regenerated noise tested to ISO 7235
- Meets the hygiene requirements of VDI 6022, VDI 3803 Part 1 and DIN 1946 Part 4
- EC Directive 2014/34/EC (ATEX): Equipment and protective systems intended for use in areas with potentially explosive atmospheres
- EC Directive 1999/92/EC (ATEX): Improvement of the safety and health protection of workers potentially at risk from explosive atmospheres
- Leakage class and pressure class according to EN 15727

Maintenance

- Low-maintenance as construction and materials are not subject to wear

Description



Variants

- 025: Circular silencer with 25 mm insulation
- 050: Circular silencer with 50 mm insulation
- 100: Circular silencer with 100 mm insulation

Parts and characteristics

- Circular casing
- Perforated inner duct
- Absorption material

Construction features

- Circular casing
 - Outer duct: spiral duct, galvanised steel 1.0917
 - Outer duct: plain duct, stainless steel 1.4301
- Spigot suitable for circular ducts to EN 1506 or EN 13180
- Lip seals up to nominal size 800
- Max. operating pressure 2000 Pa
- Max. airflow velocity 20 m/s
- Max. operating temperature 90 °C

Nominal sizes

- ØD: 80, 100, 125, 160, 200, 250, 315, 400, 450, 500, 560, 630, 710, 800 mm
- L: 500, 1000, 1500 mm

For VAV terminal units and CAV controllers

- ØD: 100, 125, 160, 200, 250, 315, 400 mm