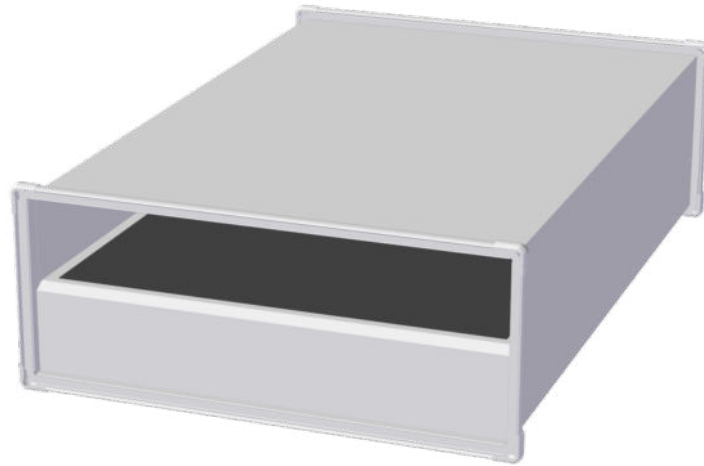


Sound attenuators

LKL



Low-profile rectangular attenuator.

- Easy installation
- Low-profile design
- Included in the “Attenuator Selection”



General information	2	Dimensions and weight	6
Quick sizing	3	Product details	7
Order code	5		

General information

Application

LKL is a rectangular sound attenuator for installation in rectangular ducting.

Materials and surfaces

LKL comes in a galvanised steel design. The flanged joint is equipped with a polyethylene gasket. A splitter with mineral wool with a glass fibre layer has been fitted inside.

Construction

LKL is a rectangular steel unit with internal splitter. The unit is equipped with a flanged connection at each end. LKL is available in heights from 150 mm to 400 mm (50 mm increments), and in lengths of 640, 1000, 1240 and 1500 mm. Widths in 50 mm increments. LKL complies with air tightness class B.

Quick sizing

In order to ensure correct/optimum splitter combination, an “Attenuator Selection” computer program has been developed and is available for download from our website: www.trox.no.

Maintenance

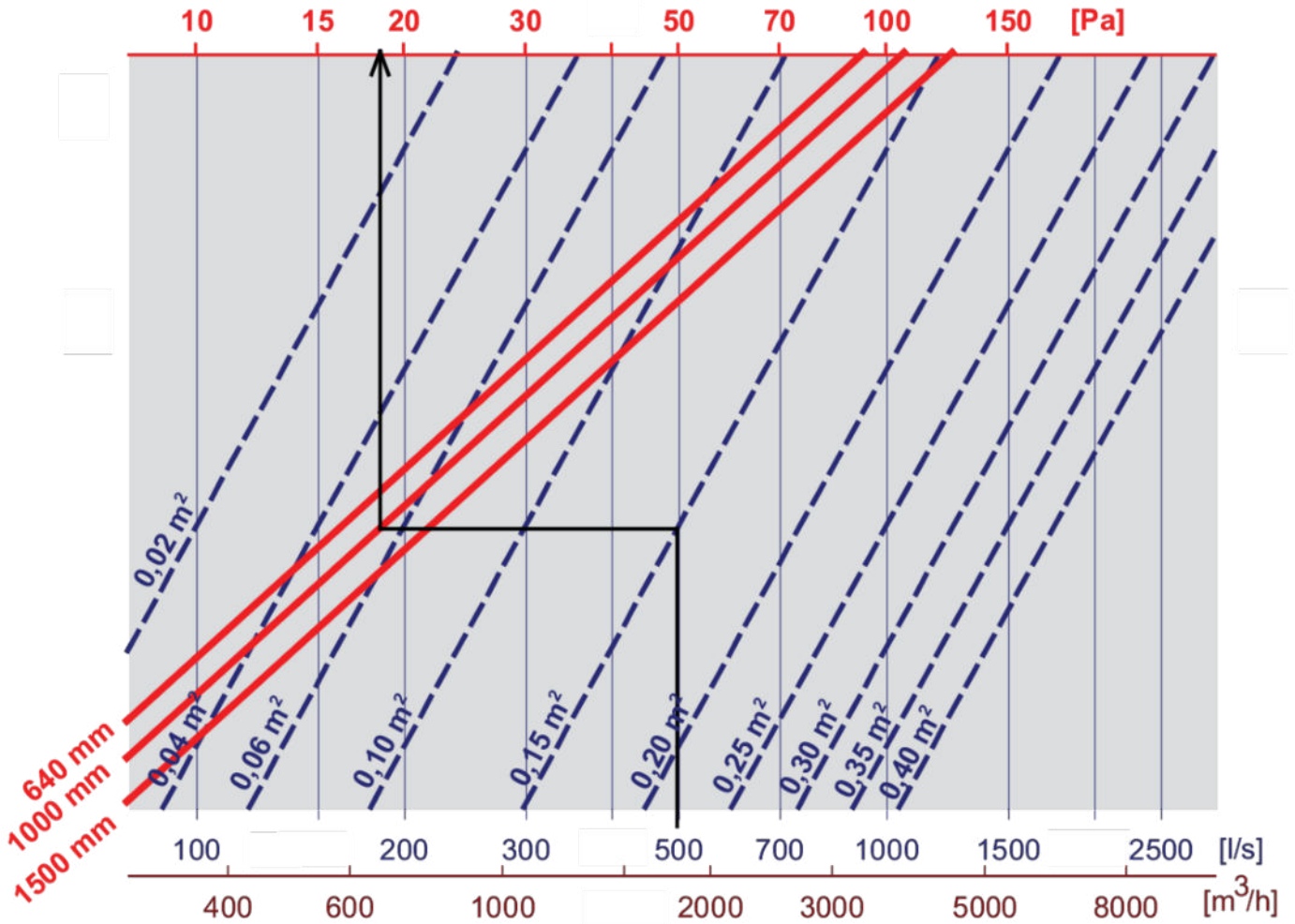
The attenuation material used in LKL has a layer approved for mechanical cleaning with rotating nylon brushes.

Environment

Enquiries regarding product declaration can be directed to our sales team, or information can be found at www.trox.no

Quick sizing

Calculation diagram


Example:

A flow rate of 500 l/s through a LKL unit which is 500 mm in width, 300 mm in height and 1000 mm in length:

The gross area is: $0.5 \times 0.3 \text{ m} = 0.15 \text{ m}^2$

From 500 l/s on the lower axis, a line is extended to the blue diagonal line for 0.15 m^2 .

A horizontal line is then drawn to the red diagonal line for 1000 mm length.

Finally, the line is extended vertically to the upper axis and shows a pressure drop of 18 Pa.



Static sound attenuation, LKL

Height	Length	Octaveband [Hz]							
		[mm]	63	125	250	500	1k	2k	4k
150	640	1	1	3	12	19	12	9	6
150	1000	2	2	6	17	27	17	11	8
150	1240	2	3	9	21	35	22	14	10
150	1500	3	5	13	25	42	27	16	12
200	640	2	2	7	13	15	8	7	7
200	1000	5	4	9	17	21	12	9	8
200	1240	8	7	12	21	27	15	10	8
200	1500	12	9	15	25	33	18	12	9
250	640	1	3	7	13	12	7	6	7
250	1000	1	5	10	18	17	10	7	8
250	1240	1	6	12	23	21	12	9	9
250	1500	1	8	15	28	26	15	10	10
300	640	1	2	7	12	10	6	6	6
300	1000	1	4	9	16	14	8	6	7
300	1240	1	6	12	21	17	10	7	7
300	1500	1	8	15	26	21	11	8	8
350	640	2	2	6	12	18	13	8	5
350	1000	3	3	8	16	25	18	10	7
350	1240	4	4	11	20	33	22	12	8
350	1500	5	6	14	24	40	27	15	9
400	640	1	2	6	11	17	12	7	5
400	1000	1	4	8	15	24	15	8	6
400	1240	2	5	11	19	30	18	10	8
400	1500	3	7	13	22	37	22	12	9



Order code

Order code for sound attenuator LKL

LKL / 500 × 350 × 1240 / A2 / P1 - RAL 9010

1	2	3	4	5	6

1 Type

LKL rectangular sound attenuator

2 Nominal width [mm]

Specify width

3 Nominal height [mm]

Specify height

4 Nominal length [mm]

640, 900, 1000, 1240, 1500

5 Material

No entry: standard

A2 stainless steel**A4** acid resistant**6 Exposed surface**

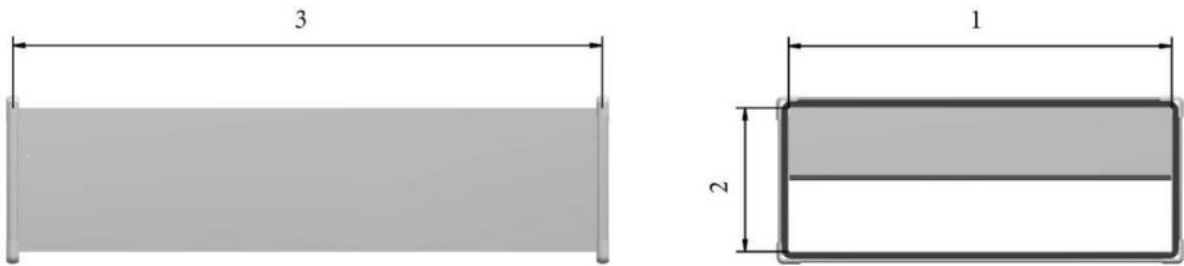
No entry: galvanized sheet steel

9003 powder-coated, RAL 9003 (signal white)**P1** powder coated, RAL 9010 (pure white)**PS** powder coated, specify NCS colour**Order example: LKL/500×350×1240/A2/P1-RAL 9010**

Type	LKL – rectangular sound attenuator
Nominal width [mm]	500
Nominal height [mm]	350
Nominal length [mm]	1240
Material	stainless steel
Exposed surface	powder coated, RAL 9010 (pure white)

Dimensions and weight

Dimensional drawing LKL



- 1 - Width
- 2 - Height
- 3 - Length

Dimensions and weight, LKL

Height	Width	Length [mm]	Weight* [kg]
150	150-1000	640, 1000, 1240, 1500	18.5 × B × L
200	200-1000	640, 1000, 1240, 1500	19.0 × B × L
250	250-1000	640, 1000, 1240, 1500	21.8 × B × L
300	300-1000	640, 1000, 1240, 1500	23.2 × B × L
350	350-1000	640, 1000, 1240, 1500	25.0 × B × L
400	400-1000	640, 1000, 1240, 1500	27.0 × B × L

*Weight is calculated by using the formula: factor × B × L, with B and L specified in metres.

Product details

Installation principle shown

