

AGGREGATER

AHU ONLINE CONFIGURATOR



AHU CONFIGURATION IN NO TIME AT ALL

No expert knowledge required:

- Configure TROX X-CUBE units
- Calculate energy and other consumption values
- Calculate life cycle costs

TROX AUTOMATICALLY CHECKS ENERGY EFFICIENCY ACCORDING TO ECODESIGN DIRECTIVE

| ErP-Stage | | January 2016 | January 2018 |
|--|---|-------------------------------|-------------------------------|
| Heat recovery system (HRS) BVU with a regulator device | | demand | demand |
| HRS BVU heat recovery efficiency η [%] | Run-around coil system | 63 | 68 |
| | Plate heat exchangers, rotary heat exchanger, miscellaneous | 67 | 73 |
| Filter differential pressure monitoring | | – | demand |
| Fan speed regulation | | demand | demand |
| Fan efficiencies UVU η_{fan} [%] | $P_{ev} \leq 30$ kW | $6,2 \times \ln(P_{ev}) + 35$ | $6,2 \times \ln(P_{ev}) + 42$ |
| | $P_{ev} > 30$ kW | 56,1 | 63,1 |
| Internal SFP-Value reference configuration [W/(m³/s)] | BVU | | |
| | Run-around coil system | | |
| | $q < 2$ m³/s | 1700+E-300 x q/2-F | 1600+E-300 x q/2-F |
| | $q \geq 2$ m³/s | 1400+E-F | 1300+E-F |
| | Plate heat exchangers, rotary heat exchanger, miscellaneous | | |
| | $q < 2$ m³/s | 1200+E-300 x q/2-F | 1100+E-300 x q/2-F |
| UVU | $q \geq 2$ m³/s | 900+E-F | 800+E-F |
| | | 250 | 230 |
| HRS-Efficiency bonus E [W/(m³/s)] | Run-around coil system | $(\eta-0,62) \times 3000$ | $(\eta-0,68) \times 3000$ |
| | Plate heat exchangers, rotary heat exchanger, miscellaneous | $(\eta-0,67) \times 3000$ | $(\eta-0,73) \times 3000$ |
| Filter correction value F [W/(m³/s)] | Reference configuration | 0 | 0 |
| | Filter M5 is missing | 160 | 150 |
| | Filter F7 is missing | 200 | 190 |
| | Filters M5 + F7 are missing | 360 | 340 |

With the adoption of the Kyoto Protocol, the European Union has committed itself to reducing CO2 emissions by at least 20 percent by 2020. In order to reach this goal, the EU adopted already in 2005 the Energy-Using Products Directive. The Energy-Related Products Directive 2009/125/EG, colloquially called 'ecodesign directive', defines minimum requirements for many energy-related products. Within the European Union, air handling units have to meet new energy efficiency requirements from 1 January 2016 onwards. The next step after that will become

effective two years later, on 1 January 2018.

TROX air handling units of Type X-CUBE are configured to individual customer requirements with a dedicated configuration software. This software automatically considers the new energy efficiency requirements for all X-CUBE air handling units and hence ensures their correct configuration. All X-CUBE air handling units that are produced and placed on markets of the European Union from 1 January 2016 onwards meet the new requirements.

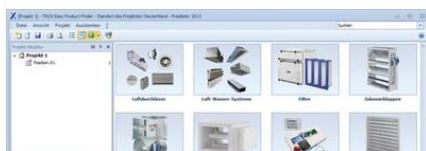
Please find attached the table ErP – Efficiency Requirements as of 2016

TROX SERVICES



PRODUKTSØGNING A-Z

æmt og hurtigt



TROX EASY PRODUCT FINDER

Hurtig. Pålidelig. Nyskabende.



KOMPETENCE

Kompetence - spændende iscenesat.